

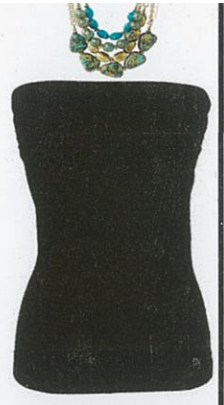
Turtleneck ~
Long chain, pendant,
or beads



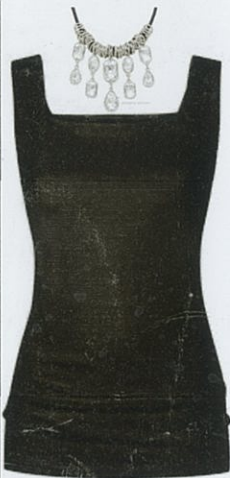
Collar ~
Short pendant
or choker



Scoop ~
Short pendant
with volume



Strapless ~
Layered choker



Square ~
Angular pendant



Off-shoulder ~
Asymmetric



Halter ~
Slim pendant



V-neck ~
V-shaped pendant



Cowl ~
Statement
earrings



Boat ~
Long strand
of beads



Crew ~
Bib or collar



Sweetheart ~
Carved beads
or pendants

Landi
Hart